

KEY CONTINUED:

- STOCK PROOF FENCE
- LOCALISED ROAD WIDENING
- OVERHEAD UTILITIES**
- HV 33kV (NGED SURVEYED)
- HV 132kV (NGED SURVEYED)

© CROWN COPYRIGHT, ALL RIGHTS RESERVED.
2024 LICENCE NUMBER 0100031673.

KEY:

- LANDLORD'S PROPERTY (INSIDE OF LINE DENOTES BOUNDARY)
- DEVELOPMENT BOUNDARY (OUTSIDE OF LINE DENOTES BOUNDARY)
- PALISADE, WELDMESH OR ACOUSTIC FENCE
- BATTERY STORAGE ENCLOSURE (BSE)
- POWER CONVERSION SYSTEM (PCS) WITH SINGLE MV SKID AND APRON SLAB
- BESS SUBSTATION BUILDING
- AUXILIARY TRANSFORMER
- LV DISTRIBUTION EQUIPMENT
- AGGREGATION PANEL WITH LV PILLAR
- PRE-INSERTION RESISTOR
- CAPACITOR BANK
- HARMONIC FILTER AND RESISTOR
- SPARES CONTAINER
- LIGHTING / CCTV COLUMN
- SURFACE FINISH TYPICALLY COMPRISING STONE OR ASPHALT
- ACCESS TRACK
- EARTHWORKS BATTER

CONTINUED...

2	BM	VM	JH	2024-03-12	REMOVED COMMS TOWER
1	BM	CH	JH	2024-03-11	FIRST ISSUE
ISSUE	DRAWN	CHKD	APPD	DATE	REVISION NOTES

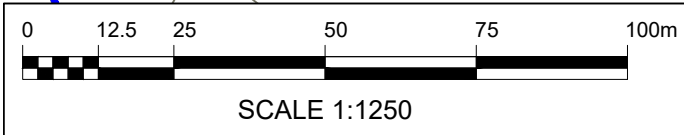
PURPOSE	COORDINATES
PRELIMINARY	OSGB 1936
SCALE	DATUM
1:1,250 @A3	N/A
LAYOUT DRAWING	T-LAYOUT NO
N/A	N/A

PROJECT TITLE
STONEWORTHY BESS

DRAWING TITLE
INFRASTRUCTURE LAYOUT

RES DRAWING NUMBER	REV
05197-RES-LAY-DR-PT-001	2

THIS DRAWING IS THE PROPERTY OF RENEWABLE ENERGY SYSTEMS LIMITED AND NO REPRODUCTION MAY BE MADE IN WHOLE OR IN PART WITHOUT PERMISSION



BEAUFORT COURT,
 EGG FARM LANE,
 KINGS LANGLEY,
 HERTS WD4 8LR, UK
 TEL +44 (0) 1923 299200
 WWW.RES-GROUP.COM